



## **Cetronic Power Solutions Ltd**

Unit 5, Optima Business Park,  
Pindar Road, Hoddesdon, Herts.  
EN11 0DY, United Kingdom  
Tel: +44 (0)1920 871077  
Fax: +44 (0)1920 871337  
E-mail: sales@cetronicpower.com

ISO 9001 CERTIFIED ORGANIZATION



## **True On-Line (double conversion) Uninterruptible Power Supply Complete with integral automatic bypass switch**

### **Premium Pro 700VA to 3000VA**

**Single Phase Input / Single Phase Output**



- **On-line double conversion**
- **Automatic bypass switch**
- **Input power factor >0.99**
- **Superior battery management**
- **50Hz or 60Hz operation**
- **Wide input voltage range**
- **Programmable output**
- **Various battery options**
- **RS-232 & USB ports**
- **SNMP network card option**
- **Free software**

The **Premium Pro** UPS range comprises of five models (700-1000-1500-2200-3000VA) and uses double conversion (VFI) technology. The load is powered continuously through the inverter with an EMI filtered, stabilised and regulated sinewave supply. The input and output EMI filters considerably increases the immunity of the load to mains disturbances, even on bypass.

In the event of a mains failure the UPS can power the load for long periods (using battery extension packs) or provide sufficient time for the supplied load to be shutdown.

ER models (extended runtime) have no internal batteries. They are supplied with a larger internal battery charger so that long back-up times can be achieved.

## Specifications

<b>MODEL</b>	<b>PRP 700</b>	<b>PRP 1000</b>	<b>PRP 1500</b>	<b>PRP 2200</b>	<b>PRP 3000</b>
Rated Power(VA)	700	1000	1500	2200	3000
Power (W)	560	800	1200	1760	2400

<b>INPUT</b>	
Nominal Input Voltage	220, 230, 240Vac Single Phase
Voltage Range	184V – 276Vac at full load (lower voltages at part load)
Frequency	50/60 Hz $\pm$ 5 Hz
Power Factor	>0.99
Input Current	Sinewave ( $\leq$ 7% THDI)

<b>BYPASS</b>	
Voltage Range	180 – 264Vac
Frequency Range	Selected frequency $\pm$ 5%

<b>BATTERIES</b>	
Type	Sealed lead acid, maintenance free

<b>OUTPUT</b>	
Nominal Output Voltage	Selectable 220, 230 or 240Vac $\pm$ 1.5% Single Phase
Waveform	Sinewave with distortion $\leq$ 2%
Frequency	50 or 60Hz
Crest Factor	3:1
Overload Capability	>100% <110% for 2mins, >110% <150% for 5secs, >150% for 1secs

<b>COMMUNICATIONS INTERFACE</b>	
RS-232 with Opto-Isolated Contacts	YES
USB Port	YES
SNMP Solution	OPTIONAL (plug-in card)
Volt-Free Contacts(230Vac)	OPTIONAL (plug-in card)

<b>ENVIRONMENT</b>	
Operating Temperature	0 - 40°C (15 to 25° recommended for batteries)
Relative Humidity	< 95% non condensing
Protection	Overload-short circuit-overvoltage–undervoltage-circuit breaker-low battery

<b>GENERAL DATA</b>	
Colour	Black
Audible Noise	<40dBA at 1 metre
Enclosure Protection	IP20
Safety	EN62040-1-1 and Directive 2006/95/EC
EMC	EN62040-2 category C2 and Directive 2004/108/EC

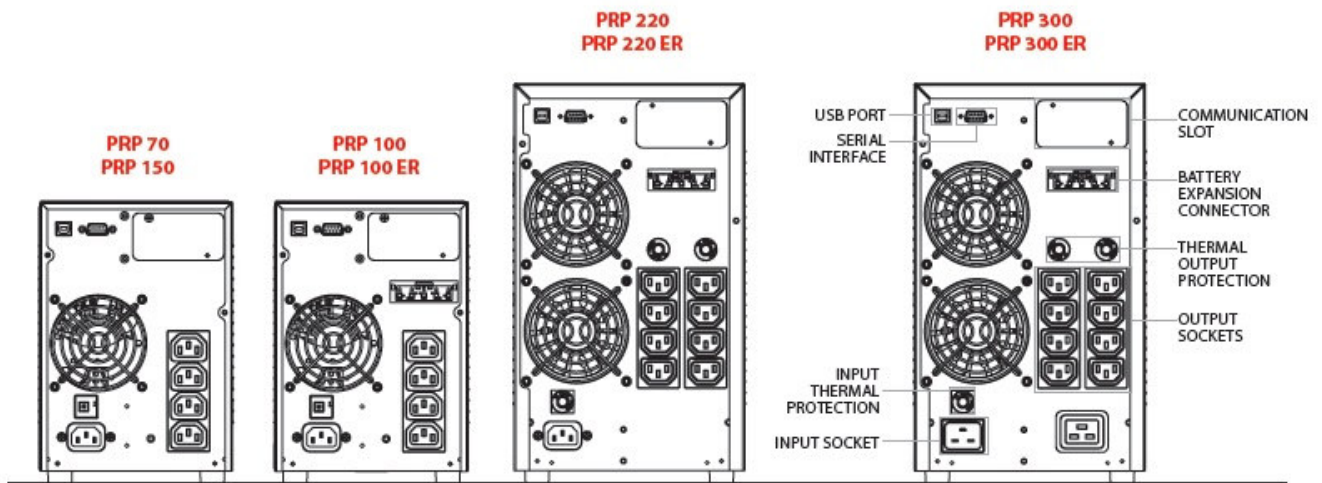
<b>WEIGHTS AND DIMENSIONS</b>			
PRP 700	6 mins*	158x422x235mm (HxWxD)	Wt: 11Kgs
PRP 1000	7 mins*	158x422x235mm (HxWxD)	Wt: 14Kgs
PRP 1000ER	4A Charger	158x422x235mm (HxWxD)	Wt: 7Kgs
PRP 1500	5 mins*	158x422x235mm (HxWxD)	Wt: 15Kgs
PRP 2200	6 mins*	190x446x333mm (HxWxD)	Wt: 26Kgs
PRP 2200ER	8A Charger	190x446x333mm (HxWxD)	Wt: 11Kgs
PRP 3000	5 mins*	190x446x333mm (HxWxD)	Wt: 28Kgs
PRP 3000ER	8A Charger	190x446x333mm (HxWxD)	Wt: 14Kgs

\* Back-up times full load  
Additional battery back-up time available

Specifications are subject to change without prior notice.

### Optional Extras

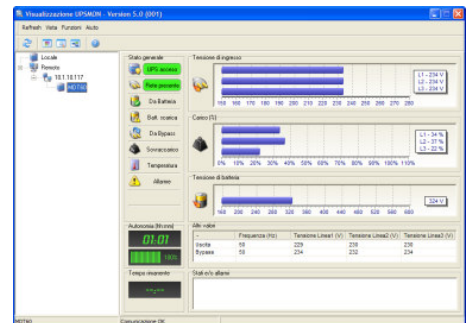
- External Manual Bypass Switch
- Remote Alarm Panel
- Extended Battery Back-Up Times
- SNMP Network Interface Card
- Volt-Free Contacts (Card)
- 19" Rack-Mounted Units



Front Panel LCD



Remote Alarm Panel



Software Screenshot