



Cetronic Power Solutions Ltd

Unit 5, Optima Business Park,
Pindar Road, Hoddesdon, Herts.
EN11 0DY, United Kingdom
Tel: +44 (0)1920 871077
Fax: +44 (0)1920 871337
E-mail: sales@cetronicpower.com

ISO 9001 CERTIFIED ORGANIZATION



Certificate No. 13590

**True On-Line (double conversion) Uninterruptible Power Supply
Complete with integral static and manual bypass switch**

Advanced Power Module (APM)

5KVA to 10KVA

Single Phase or Three Phase Input / Single Phase Output



- **On-line double conversion**
- **Static and manual bypass**
- **Input power factor >0.95**
- **IGBT power electronics**
- **LCD screen**
- **Superior battery management**
- **50Hz or 60Hz operation**
- **Wide input voltage range**
- **Programmable output**
- **Various battery options**
- **On-Line or Standby Operation**
- **RS-232 and contact interfaces**
- **SNMP communication options**
- **Free software**

ECONOMY MODE
increases efficiency to 98%

Specifications

MODEL	APM 5 - 11	APM 6 - 11	APM 6.5 - 11	APM 8 - 11	APM 10 - 11
Rated Power (VA)	5000	6000	6500	8000	10000
Power (W)	4000	4800	5200	6400	8000

INPUT					
Nominal Input Voltage	230Vac single-phase		230Vac single-phase / 400Vac three-phase		
Voltage Range (@ full load)	184V – 276V				
Frequency	50 - 60Hz				
Power Factor	>0.95				
Input Current Distortion	<6% single phase / <26% three phase				
Maximum Input Current	30A	36A	36A/12A	42A/14A	51A/17A

BYPASS	
Voltage Range	180 - 264 Vac
Nominal Frequency	50/60Hz
Frequency Range	Selected frequency \pm 5 Hz

BATTERIES	
Type	Sealed lead acid, maintenance free
Recharge Time	6-8 hours

INVERTER OUTPUT	
Nominal Output Voltage	220 - 230 -240 Vac selectable
Static Stability	\pm 1.5%
Dynamic Stability	\leq 5% in 20ms
Waveform	Sinewave
Harmonic Distortion with linear load	< 3%
Harmonic Distortion with non-linear load	< 6%
Crest Factor	3:1
<i>Overload Capability:</i>	
100% < Load < 125%	1 minutes
110% \leq Load < 150%	4 seconds
Load \geq 150%	0.5 seconds

COMMUNICATIONS INTERFACES	
RS-232 and Opto-Isolated Contacts	Yes
SNMP Solution	Optional (plug-in card)
Emergency Power Off (EPO)	Yes

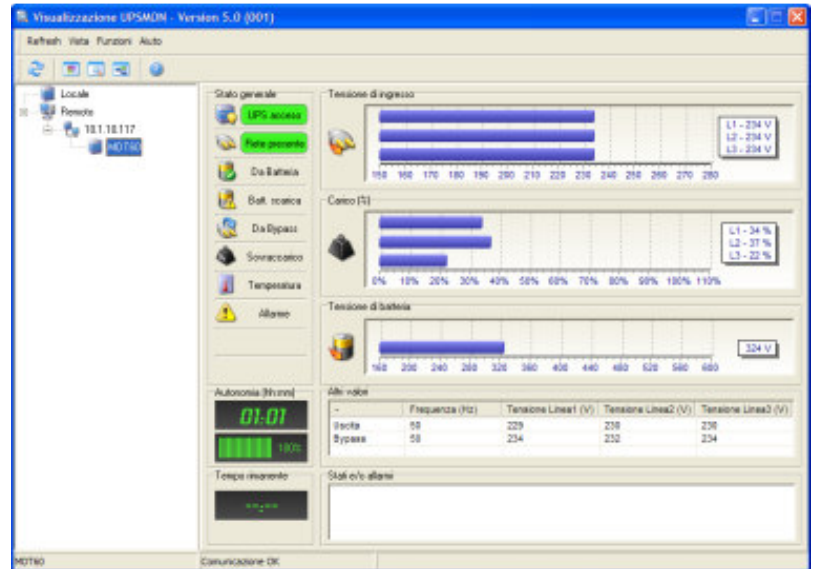
ENVIRONMENT	
Operating Temperature	0 - 40°C (15 - 25°C recommended for batteries)
Relative Humidity	95% non-condensing

GENERAL DATA	
Colour	Dark Grey RAL 7016
Audible Noise	<45dBA @ 1m
Enclosure Protection	IP20
Compliance	EN 62040-1 EMC EN 62040-2 Directives 2006/95/EC - 2004/108 EC EN 62040-3

WEIGHTS AND DIMENSIONS					
Weight (kg)	89	90	91	94	95
Dimensions (hwd) (mm)	615x282x785				

Optional Extras

- SNMP Network Interface Card
- Remote Alarm Panel
- External Manual Bypass Switch
- Extended Battery Back-Up Times
- Service and Maintenance Plans



APM 5 - 11
APM 6 - 11
APM 6.5 - 11
APM 8 - 11
APM 10 - 11

