



Cetronic Power Solutions Ltd

Unit 5, Optima Business Park,
Pindar Road, Hoddesdon, Herts.
EN11 0DY, United Kingdom
Tel: +44 (0)1920 871077
Fax: +44 (0)1920 871337
E-mail: sales@cetronicpower.com

ISO 9001 CERTIFIED ORGANIZATION



True On-Line (double conversion) Uninterruptible Power Supply Complete with integral automatic bypass switch

Premier Plus **700VA to 3000VA**

Single Phase Input / Single Phase Output



- **On-line double conversion**
- **Automatic bypass switch**
- **Input power factor >0.97**
- **Superior battery management**
- **50Hz or 60Hz operation**
- **Wide input voltage range**
- **Programmable output**
- **Various battery options**
- **RS-232 interface**
- **SNMP communication options**
- **Free software**

The **Premier Plus** UPS range comprises of five models (700-1000-1500-2000-3000VA) and uses double conversion (VFI) technology. The load is powered continuously through the inverter with an EMI filtered, stabilised and regulated sinewave supply. The input and output EMI filters considerably increases the immunity of the load to mains disturbances, even on bypass.

In the event of a mains failure the UPS can power the load for long periods (using battery extension packs) or provide sufficient time for the supplied load to be shutdown.

ER models (extended runtime) have no internal batteries. They are supplied with a larger internal battery charger so that long back-up times can be achieved.

Specifications

MODEL	PP 700	PP 1000	PP 1500	PP 2000	PP 3000
Rated Power(VA)	700	1000	1500	2000	3000
Power (W)	490	700	1050	1400	2100

INPUT	
Nominal Input Voltage	220, 230, 240Vac Single Phase
Voltage Range	160V – 300Vac at full load (lower voltages at part load)
Frequency	50/60 Hz \pm 5 Hz
Power Factor	>0.97
Input Current	Sinewave

BYPASS	
Voltage Range	180 – 264Vac
Frequency Range	Selected frequency \pm 5%

BATTERIES	
Type	Sealed lead acid, maintenance free

OUTPUT	
Nominal Output Voltage	Selectable 220, 230 or 240Vac \pm 1.5% Single Phase
Waveform	Sinewave with distortion \leq 2%
Frequency	50 or 60Hz (auto sensing)
Crest Factor	3:1
Overload Capability	110% for 30mins, 130% for 30secs, 150% for 10secs

COMMUNICATIONS INTERFACE	
RS-232 and Opto-Isolated Contacts	YES
SNMP Solution	OPTIONAL (plug-in card)

ENVIRONMENT	
Operating Temperature	0 - 40°C (15 to 25° recommended for batteries)
Relative Humidity	95% non condensing
Protection	Overload-short circuit-overvoltage-undervoltage-temperature-low battery

GENERAL DATA	
Colour	Dark Grey
Audible Noise	<40dBA at 1 metre
Enclosure Protection	IP20
Safety	EN62040-1-1 and Directive EEC73/23, 93/68; EN62040-3
EMC	EN62040-2 and Directive EEC89/336
Surge	IEC 801 3KA 8/20 μ s

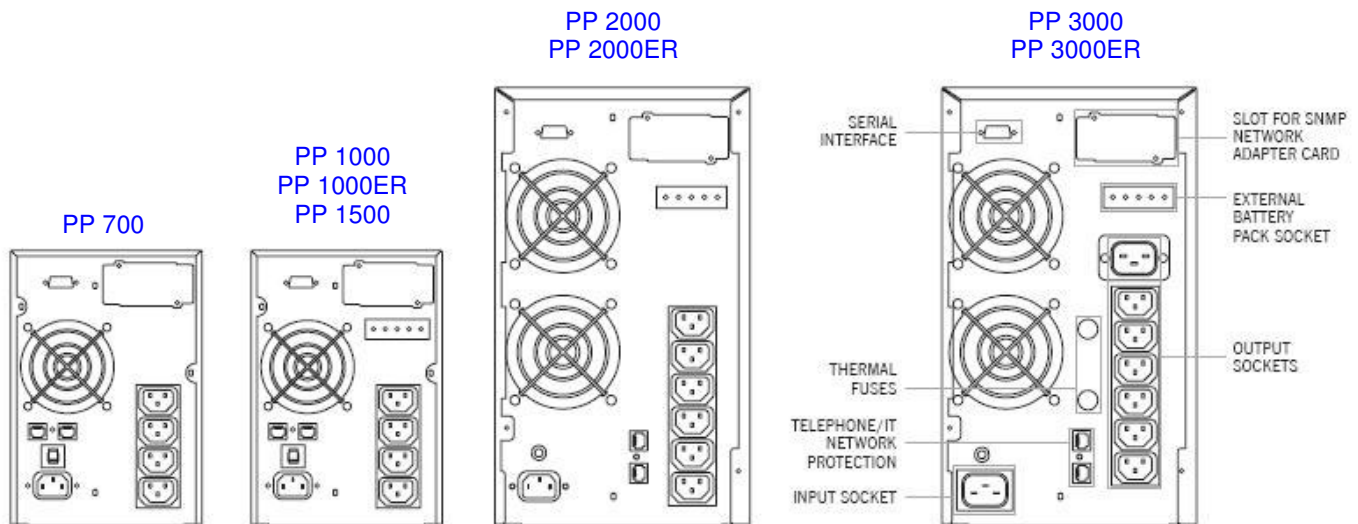
WEIGHTS AND DIMENSIONS			
PP 700	6 mins/8 mins*	231x158x400mm (HxWxD)	Wt: 12Kgs
PP 1000	6 mins/8 mins*	231x158x400mm (HxWxD)	Wt: 14Kgs
PP 1000ER	4A Charger	231x158x400mm (HxWxD)	Wt: 8Kgs
PP 1500	6 mins/8 mins*	231x158x500mm (HxWxD)	Wt: 19Kgs
PP 2000	10 mins/13 mins*	340x192x460mm (HxWxD)	Wt: 34Kgs
PP 2000ER	8A Charger	340x192x460mm (HxWxD)	Wt: 14Kgs
PP 3000	7 mins/8 mins*	340x192x460mm (HxWxD)	Wt: 35Kgs
PP 3000ER	8A Charger	340x192x460mm (HxWxD)	Wt: 15Kgs

* Back-up times full load/typical (load dependant)
Additional battery back-up time available

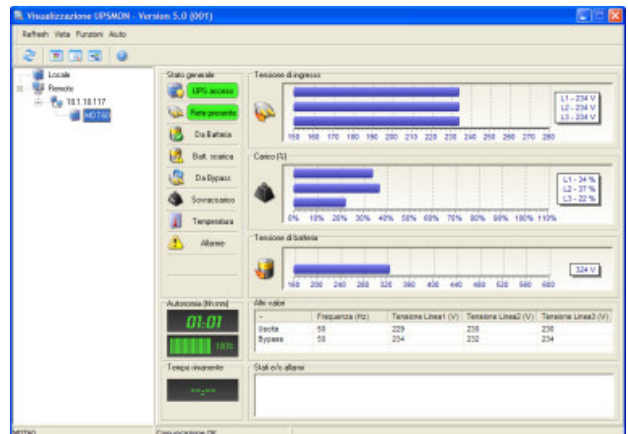
Specifications are subject to change without prior notice.

Optional Extras

- External Manual Bypass Switch
- Remote Alarm Panel
- Extended Battery Back-Up Times
- SNMP Network Interface Card
- Volt-Free Contacts (Box)
- 19" Rack-Mounted Units



Left: Remote Alarm Panel



Right: Software screenshot