

Premium Power

5-10kVA

Three-phase or Single-phase input
Single-phase output

Uninterruptible Power Supply

Main Features

- On-line double conversion
- Static and manual bypass
- Low impact on source
- Auto restart
- LCD screen
- Superior battery management
- 50 or 60Hz operation
- Wide input voltage range
- Programmable output
- Various battery options
- On-line or Standby operation
- RS-232 and contact interfaces
- SNMP communication options
- Free software



ECONOMY MODE
increases efficiency to 98%



Tel: +44 (0)1920 871077
Fax: +44 (0)1920 871337
Email: sales@cetronicpower.com

Your satisfaction is our motivation
www.cetronicpower.com

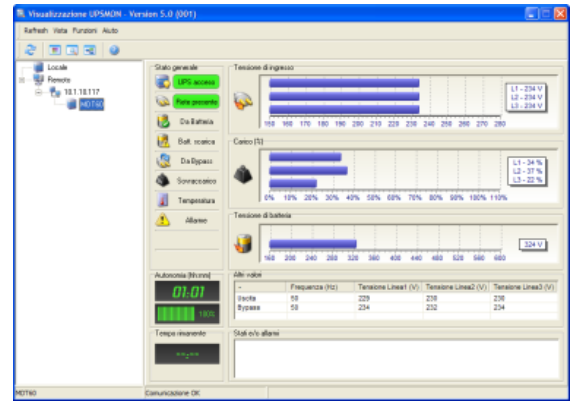
SPECIFICATIONS

MODEL	PP 5000	PP 6000	PP 6500	PP 8000	PP 10000
Rated Power (VA)	5000	6000	6500	8000	10000
Power (W)	4000	4800	5200	6400	8000
INPUT					
Nominal voltage	220-230-240 Vac		220-230-240 Vac or 380-400-415 Vac		
Nominal frequency	50 or 60 Hz \pm 5%				
BYPASS					
Voltage tolerance	180 – 264 Vac (selectable)				
Frequency tolerance	Selected frequency \pm 5%				
OUTPUT					
Nominal voltage	220 - 230 - 240 Vac selectable				
Voltage distortion	< 3% with linear load / < 6% with non-linear load				
Frequency	Selectable: 50 Hz or 60 Hz				
Static variation	\pm 1.5%				
Dynamic variation	\leq 5% in 20 ms				
Waveform	Sinusoidal				
Crest factor	\geq 3:1				
BATTERIES					
Type	Sealed lead acid				
Charging time	6-8 hours				
OVERLOAD TIMES					
100% < Load < 125%	1 minute				
125% < Load < 150%	4 seconds				
Load > 150%	0.5 seconds				
OTHER FEATURES					
Weight (kg)	91	92	105	106	
Dimensions (hwd) (mm)	615 x 282 x 785				
Communication	USB / RS232 / Slot for communications interface				
Regulations	EN 62040-1 EMC EN 62040-2 directive 2006/95/EC – 2004/108 EC EN 62040-3				
Ambient temperature	0°C / +40°C				
Relative humidity	<95% non-condensing				
Colour	Dark grey RAL 7016				
Noise level	< 45 dBA at 1m				

Specifications subject to change prior to notice

Optional Extras

- SNMP Network Interface Card
- Remote Alarm Panel
- External Manual Bypass Switch
- Extended Battery Back-Up Times
- Service and Maintenance Plans



Software Screenshot

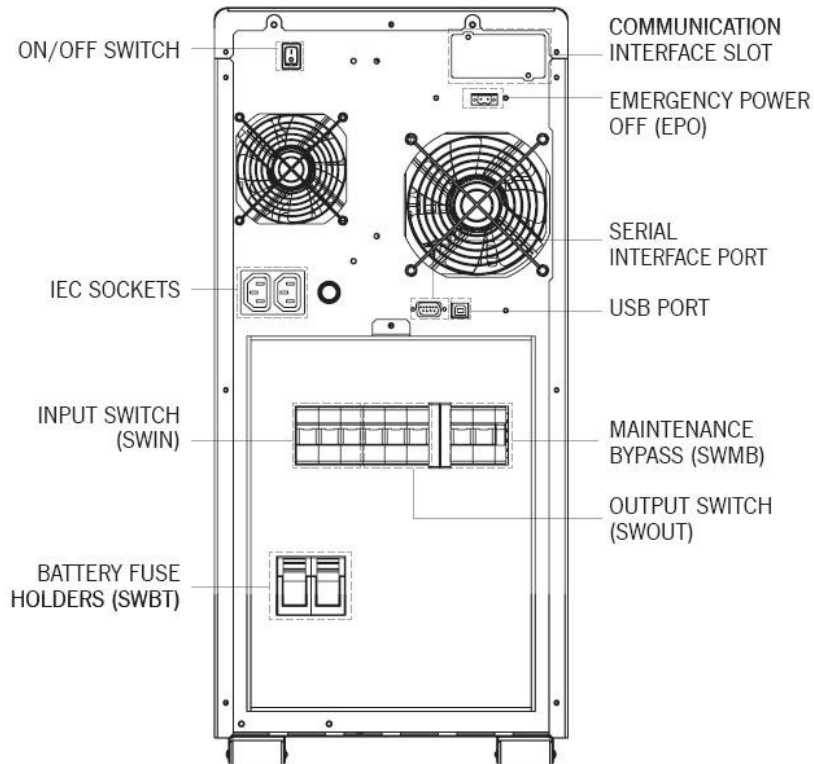


Front panel display



Remote Alarm Panel

Premium Power 5-10



Issue 08/13



Tel: +44 (0)1920 871077
 Fax: +44 (0)1920 871337
 Email: sales@cetronicpower.com



Your satisfaction is our motivation
www.cetronicpower.com