

Premium SE Dual

1000-3000VA

Single-phase input

Single-phase output

Uninterruptible Power Supply

Main Features

- On-line double conversion
- Automatic bypass switch
- Input power factor >0.98
- Superior battery management
- 50 or 60Hz operation
- Wide input voltage range
- Programmable output
- Various battery options
- RS-232 & USB ports
- SNMP network card option
- Free software



Tel: +44 (0)1920 871077

Fax: +44 (0)1920 871337

Email: sales@cetronicpower.com

Your satisfaction is our motivation

www.cetronicpower.com

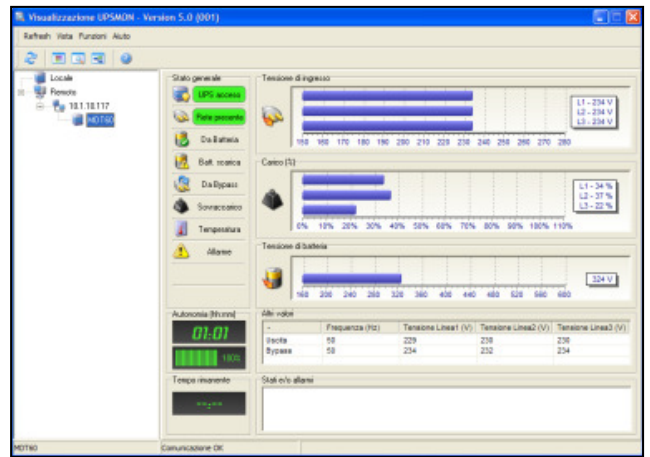
SPECIFICATIONS

MODEL	PSED 1000	PSED 1500	PSED 2200	PSED 2200ER	PSED 3000	PSED 3000ER
Rated Power (VA)	1000	1500	2200	2200	3000	3000
Power (W)	900	1350	1980	1760	2700	2400
INPUT						
Nominal voltage	220 – 230 – 240 Vac					
Nominal frequency	50 or 60 Hz ± 5%					
Power factor	> 0.98					
Current distortion	<7%					
BYPASS						
Voltage tolerance	200 – 253 Vac					
Frequency tolerance	Frequency selected (from ± 0.5Hz to ± 5Hz configurable)					
OUTPUT						
Frequency	Selectable: 50 Hz or 60 Hz or automatic selection					
Static variation	± 1%					
Dynamic variation	< 5% in 20 msec					
Waveform	Sinusoidal					
Crest factor	3:1					
BATTERIES						
Type	Sealed lead acid					
Charging time	2-4 hours					
OVERLOAD TIMES						
100% < Load < 110%	1 minute					
110% < Load < 150%	4 seconds					
Load > 150%	0.5 seconds					
OTHER FEATURES						
Weight (kg)	17.5	18	30.5	15	31	15
Dimensions (hwd) (mm)	87 x 450 x 425 (2U x 19" x 425)		87 x 450 x 625 (2U x 19" x 625)			
Communication	USB / DB9 with RS232 and contacts / Slot for communications interface					
Compliance with Standards	Safety: EN 62040-1 and Directive 2006/95/EL; EMC: EN 62040-2 category C2 and Directive 2004/108/EL					
Ambient temperature	0°C / +40°C					
Relative humidity	<95% non-condensing					
Colour	Black					
Noise level	<40 dBA @ 1m					

Specifications subject to change prior to notice

Optional Extras

- SNMP Network Interface Card
- Relay Card (Volt-free contacts)
- External Manual Bypass Switch
- Extended Battery Back-Up Times
- Remote Alarm Panel
- 19" Rack-Mounted Units



Software screenshot

1. Remove the mimic panel



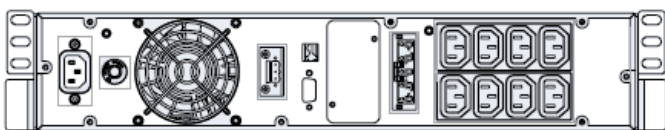
2. Rotate the mimic panel and insert it into position



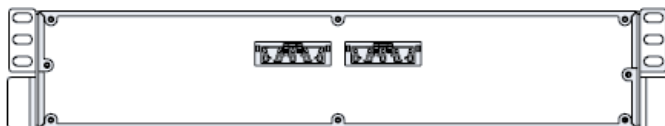
3. Rotate the UPS 90°



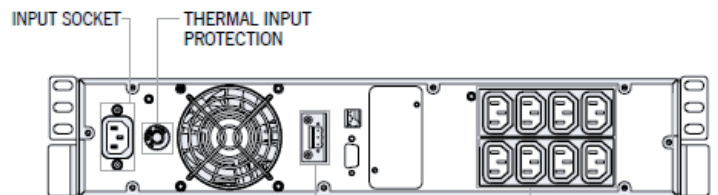
4. Attach the rack supports



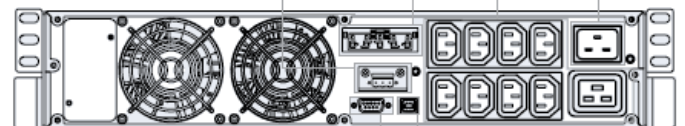
PSED 1000



BBX



PSED 1500



PSED 2200/2200ER

PSED 3000/3000ER

Issue 08/13



Tel: +44 (0)1920 871077
 Fax: +44 (0)1920 871337
 Email: sales@cetronicpower.com



Your satisfaction is our motivation
www.cetronicpower.com